

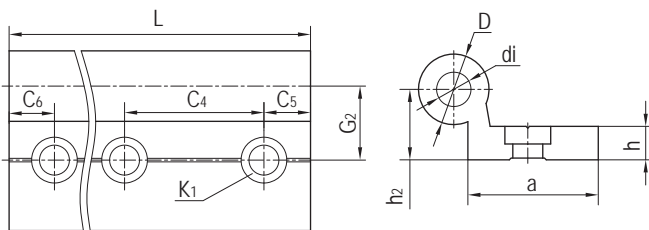
## WR01单圆直线导轨 Linear guides, single round rail



### 产品特性 Product features

- 铝合金制成的导轨，硬质氧化滑动表面
- 免维护的线性滑动导轨提供几乎无限的设计自由度
- 免润滑、抗污
- 重量轻和静音
- 安装简单，免维护
- 通过干摩擦消除对污物的敏感性
- 自由设计安装宽度
- Aluminum alloy material, Hard anodized surface of sliding
- Maintenance-free linear slide guides providing virtually limitless design freedom
- Lubrication-free and dirt-resistant
- Weight saving and silent
- Simple installation, maintenance-free
- Insensitivity to dirt through dry operation
- Variable width can be fitted

### 标准规格 Standard specifications



产品编码 Part No.:

WR01-10-0000-NH

- 空白Blank: 带安装孔 With mounting holes
- NH: 无安装孔 No mounting holes
- 长度 Length
- 直径 Diameter

产品编码 Part No.	D [mm]	di [mm]	h [mm]	a [mm]	h <sub>2</sub> [mm]	C <sub>4</sub> [mm]	C <sub>5</sub> =C <sub>6</sub> [mm]		K <sub>1</sub> [mm]	G <sub>2</sub> [mm]	L max. [mm]	重量 Weight [kg/m]
							min.	max.				
WR01-10-0000	10	-	5.5	27	9	120	20	79.5	*M6	17	3000	0.62
WR01-16-0000	16	8	7.5	27	14	120	20	79.5	M8	19	3000	0.98
WR01-20-0000	20	10.2	9.5	27	20	120	20	79.5	M8	21	3000	1.32

\*M6: 通孔 Plain holes

产品编码 Part No.	D [mm]	di [mm]	h [mm]	a [mm]	h <sub>2</sub> [mm]	C <sub>4</sub> [mm]	C <sub>5</sub> =C <sub>6</sub> [mm]		K <sub>1</sub> [mm]	G <sub>2</sub> [mm]	L max. [mm]	重量 Weight [kg/m]
							min.	max.				
WR01-10-0000-NH	10	-	5.5	27	9	-	-	-	-	-	3000	0.62
WR01-16-0000-NH	16	8	7.5	27	14	-	-	-	-	-	3000	0.98
WR01-20-0000-NH	20	10.2	9.5	27	20	-	-	-	-	-	3000	1.32

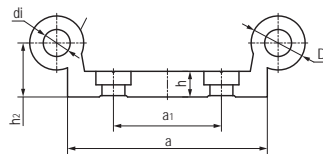
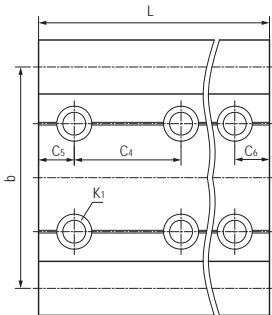
### WR02双圆直线导轨 Linear guides, double round rail



#### 产品特性 Product features

- 铝合金制成的导轨，硬质氧化滑动表面
  - 免维护的线性滑动导轨提供几乎无限的设计自由度
  - 免润滑、抗污
  - 重量轻和静音
  - 安装简单，免维护
  - 通过干摩擦消除对污物的敏感性
  - 标准安装宽度
- Aluminum alloy material, Hard anodized surface of sliding
  - Maintenance-free linear slide guides providing virtually limitless design freedom
  - Lubrication-free and dirt-resistant
  - Weight saving and silent
  - Simple installation, maintenance-free
  - Insensitivity to dirt through dry operation
  - Standard fitting width

#### 标准规格 Standard specifications



产品编码 Part No.:

WR02-10-40-0000-NH

- 空白Blank: 带安装孔 With mounting holes
- NH: 无安装孔 No mounting holes
- 长度 Length
- 宽度 Width
- 直径 Diameter

产品编码 Part No.	D [mm]	di [mm]	h [mm]	h <sub>2</sub> [mm]	b [mm]	a <sub>0.5</sub> [mm]	a <sub>1</sub> [mm]	C <sub>4</sub> [mm]	C <sub>5</sub> =C <sub>6</sub> [mm]		K <sub>1</sub> [mm]	L max. [mm]	重量 Weight [kg/m]
									min.	max.			
WR02-10-40-0000	10	-	5.5	9	40	40	-	120	20	79.5	*M6	3000	1
WR02-10-80-0000	10	-	5.5	9	74	74	40	120	20	79.5	*M6	3000	1.5
WR02-16-60-0000	16	8	7.5	14	58	54	-	120	20	79.5	M8	3000	1.9
WR02-20-80-0000	20	10.2	9.5	20	82	74	40	120	20	79.5	M8	3000	3.3

\*M6: 通孔 Plain holes

\*\*WR02-10-40/WR02-16-60为单排安装孔 a single row of mounting holes

产品编码 Part No.	D [mm]	di [mm]	h [mm]	h <sub>2</sub> [mm]	b [mm]	a <sub>0.5</sub> [mm]	a <sub>1</sub> [mm]	C <sub>4</sub> [mm]	C <sub>5</sub> =C <sub>6</sub> [mm]		K <sub>1</sub> [mm]	L max. [mm]	重量 Weight [kg/m]
									min.	max.			
WR02-10-40-0000-NH	10	-	5.5	9	40	40	-	-	-	-	-	3000	1
WR02-10-80-0000-NH	10	-	5.5	9	74	74	-	-	-	-	-	3000	1.5
WR02-16-60-0000-NH	16	8	7.5	14	58	54	-	-	-	-	-	3000	1.9
WR02-20-80-0000-NH	20	10.2	9.5	20	82	74	-	-	-	-	-	3000	3.3

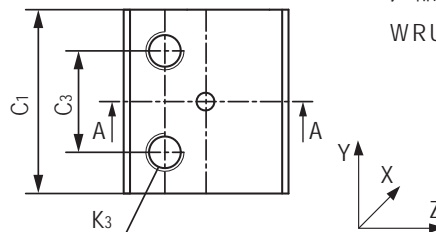
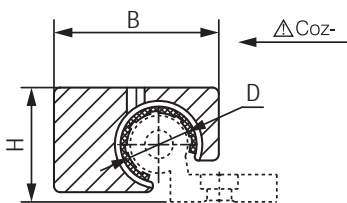
## WRU01圆导轨滑块 Round rail sliding blocks



### 产品特性 Product features

- 安装标准滑动膜EPB13、可选铝轴滑动膜MN2
- 自润滑、免维护
- 重量轻、快速装配
- 可用于WR系列单轨和双轨
- 抵抗灰尘
- 无噪音运行
- Fitted standard liners EPB13, MN2 liners for aluminum shafts
- Maintenance-free, dry-running
- Fast assembly and light weight
- For WR single and dual guide rails
- Resistant dust
- Silent operation

### 标准规格 Standard specifications



产品编码 Part No.:

WRU01-10-MN2-NA

NA:本色 Nature color  
空白 Blank:深灰色 Dark grey

材料 Material:MN2  
空白 Blank:EPB13

内径 Inner diameter

产品编码 Part No.	D [mm]	公差 Tolerance [mm]	B [mm]	C <sub>3</sub> [mm]	C <sub>1</sub> [mm]	H [mm]	K <sub>3</sub> [mm]	重量 Weight [g]	静态载荷 Static load		
									Co <sub>y</sub> - [N]	Co <sub>z</sub> + [N]	Co <sub>z</sub> - [N]
WRU01-10	10	+0.083/+0.020	26	16	29	18	M6	20	1200	1200	250
WRU01-16	16	+0.102/+0.032	34.5	18	36	27	M8	48	2100	2100	400
WRU01-20	20	+0.124/+0.040	42.5	27	45	36	M8	99	3200	3200	500
WRU01-10-MN2-NA	10	+0.083/+0.020	26	16	29	18	M6	20	1200	1200	250
WRU01-16-MN2-NA	16	+0.102/+0.032	34.5	18	36	27	M8	48	2100	2100	400
WRU01-20-MN2-NA	20	+0.124/+0.040	42.5	27	45	36	M8	99	3200	3200	500

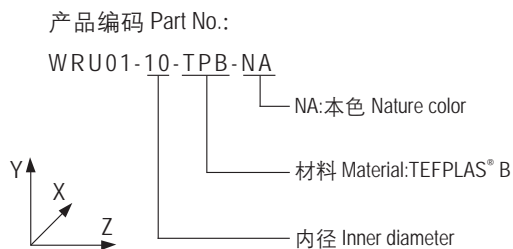
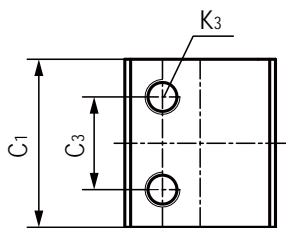
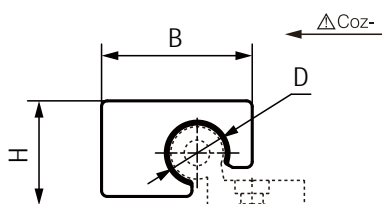
### WRU01多用型圆导轨滑块 Round rail sliding blocks(High-performance)



#### 产品特性 Product features

- 耐磨层材料TEFPLAS<sup>®</sup>B
  - 使用温度  $\pm 200^{\circ}\text{C}$
  - 最高允许速度4m/s
  - 重量轻、快速装配
  - 可用于WR系列单轨和双轨
  - 无噪音运行
- Wear layer material: TEFPLAS<sup>®</sup> B
  - Operation temperature  $\pm 200^{\circ}\text{C}$
  - Max. speed 4m/s
  - Fast assembly and light weight
  - For WR single and dual guide rails
  - Silent operation

#### 标准规格 Standard specifications



产品编码 Part No.	D [mm]	公差 Tolerance [mm]	B [mm]	C <sub>3</sub> [mm]	C <sub>1</sub> [mm]	H [mm]	K <sub>3</sub> [mm]	重量 Weight [g]	静态载荷 Static load		
									Coz- [N]	Coz+ [N]	Coz- [N]
WRU01-10-TPB-NA	10	+0.083/+0.020	26	16	29	18	M6	20	5800	5800	2900
WRU01-16-TPB-NA	16	+0.102/+0.032	34.5	18	36	27	M8	48	11520	11520	5760
WRU01-20-TPB-NA	20	+0.124/+0.040	42.5	27	45	36	M8	99	18000	18000	9000

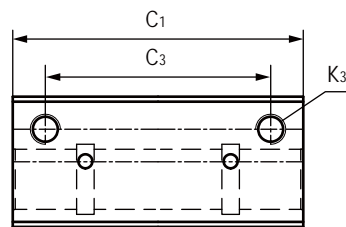
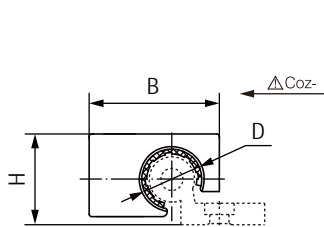
## WRU01加长型圆导轨滑块 Round rail sliding blocks(long design)



### 产品特性 Product features

- 安装2个标准滑动膜EPB13, 可选铝轴滑动膜MN2
- 承载能力是标准型的2倍
- 自润滑、免维护
- 重量轻、快速装配
- 可用于WR系列单轨和双轨
- 抵抗灰尘
- 无噪音运行
- Assembled 2pcs standard liners EPB13, MN2 liners for aluminum shafts
- Carrying capacity is twice that of the standard type
- Maintenance-free, dry-running
- Fast assembly and light weight
- For WR single and dual guide rails
- Resistant dust
- Silent operation

### 标准规格 Standard specifications



产品编码 Part No.:

WRU01-10-MN2-L-NA

- NA:本色 Nature color
- 空白 Blank:深灰色 Dark grey
- 加长型设计 Long design
- 材料 Material:MN2
- 空白 Blank:EPB13
- 内径 Inner diameter

产品编码 Part No.	D [mm]	公差 Tolerance [mm]	B [mm]	C <sub>3</sub> [mm]	C <sub>1</sub> [mm]	H [mm]	K <sub>3</sub> [mm]	重量 Weight [g]	静态载荷 Static load		
									Coy- [N]	Coz+ [N]	Coz- [N]
WRU01-10-L-NA	10	+0.083/+0.020	26	45	58	18	M6	40	2400	2400	500
WRU01-16-L-NA	16	+0.102/+0.032	34.5	54	72	27	M8	96	4200	4200	800
WRU01-20-L-NA	20	+0.124/+0.040	42.5	72	90	36	M8	198	6400	6400	1000
WRU01-10-MN2-L-NA	10	+0.083/+0.020	26	45	58	18	M6	40	2400	2400	500
WRU01-16-MN2-L-NA	16	+0.102/+0.032	34.5	54	72	27	M8	96	4200	4200	800
WRU01-20-MN2-L-NA	20	+0.124/+0.040	42.5	72	90	36	M8	198	6400	6400	1000

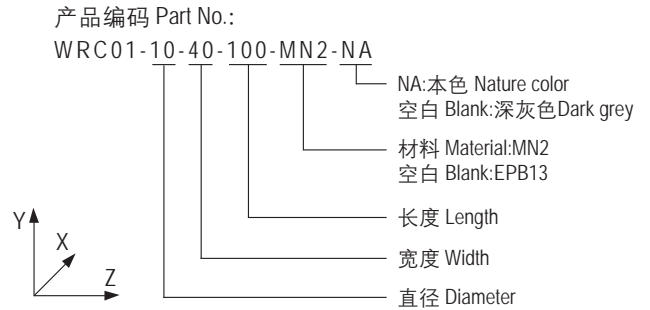
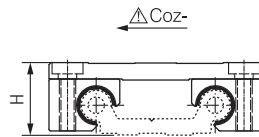
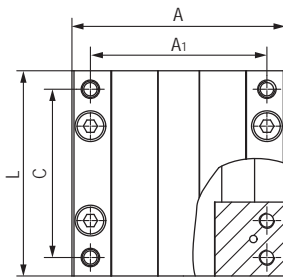
### WRC01圆导轨滑台 Assembled guide carriages



#### 产品特性 Product features

- 安装标准滑动膜EPB13
- 自润滑、免维护
- 重量轻、快速装配
- 用于WR系列双轨
- 抵抗灰尘
- 无噪音运行
- Fitted standard liners EPB13
- Maintenance-free, dry-running
- Fast assembly and light weight
- For WR dual guide rails
- Resistant dust and silent
- Silent operation
- Variable length can be fitted

#### 标准规格 Standard specifications



产品编码 Part No.	A [mm]	A <sub>1</sub> [mm]	L [mm]	C [mm]	H [mm]	静态载荷 Static load					重量 Weight [kg]
						Coy- [N]	Coz [N]	Mox [Nm]	Moy [Nm]	Moz [Nm]	
WRC01-10-40-100	73	60	100	87	24	4800	2400	96	170	170	0.29
WRC01-10-40-150	73	60	150	137	24	4800	2400	96	290	290	0.34
WRC01-10-40-200	73	60	200	187	24	4800	2400	96	410	410	0.4
WRC01-10-80-100	107	94	100	87	24	4800	2400	178	170	170	0.34
WRC01-10-80-150	107	94	150	137	24	4800	2400	178	290	290	0.42
WRC01-10-80-200	107	94	200	187	24	4800	2400	178	410	410	0.5
WRC01-16-60-100	104	86	100	82	35	8400	4200	240	270	270	0.71
WRC01-16-60-150	104	86	150	132	35	8400	4200	240	480	480	0.84
WRC01-16-60-200	104	86	200	182	35	8400	4200	240	690	690	0.97
WRC01-20-80-150	134	116	150	132	44	12800	6400	525	670	670	1.2
WRC01-20-80-200	134	116	200	182	44	12800	6400	525	990	990	1.2
WRC01-20-80-250	134	116	250	232	44	12800	6400	525	1250	1250	1.5

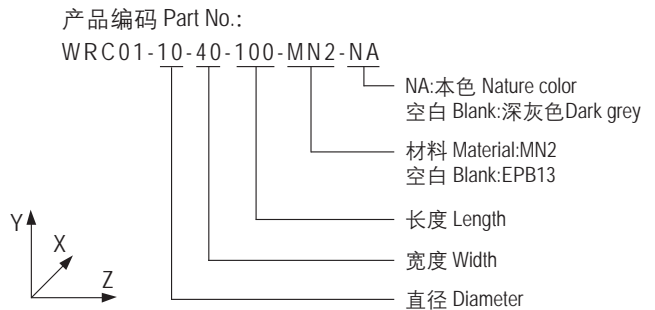
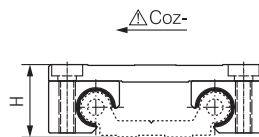
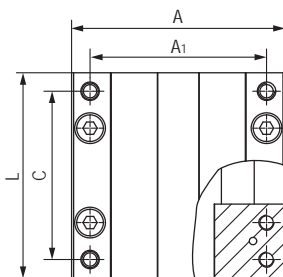
### WRC01圆导轨滑台 Assembled guide carriages



#### 产品特性 Product features

- 铝轴滑动膜MN2
- 自润滑、免维护
- 重量轻、快速装配
- 用于WR系列双轨
- 抵抗灰尘
- 无噪音运行
- MN2 liners for aluminum shafts
- Maintenance-free, dry-running
- Fast assembly and light weight
- For WR dual guide rails
- Resistant dust and silent
- Silent operation
- Variable length can be fitted

#### 标准规格 Standard specifications



产品编码 Part No.	A [mm]	A <sub>1</sub> [mm]	L [mm]	C [mm]	H [mm]	静态载荷 Static load					重量 Weight [kg]
						Coy- [N]	Coz [N]	Mox [Nm]	Moy [Nm]	Moz [Nm]	
WRC01-10-40-100-MN2	73	60	100	87	24	4800	2400	96	170	170	0.29
WRC01-10-40-150-MN2	73	60	150	137	24	4800	2400	96	290	290	0.34
WRC01-10-40-200-MN2	73	60	200	187	24	4800	2400	96	410	410	0.4
WRC01-10-80-100-MN2	107	94	100	87	24	4800	2400	178	170	170	0.34
WRC01-10-80-150-MN2	107	94	150	137	24	4800	2400	178	290	290	0.42
WRC01-10-80-200-MN2	107	94	200	187	24	4800	2400	178	410	410	0.5
WRC01-16-60-100-MN2	104	86	100	82	35	8400	4200	240	270	270	0.71
WRC01-16-60-150-MN2	104	86	150	132	35	8400	4200	240	480	480	0.84
WRC01-16-60-200-MN2	104	86	200	182	35	8400	4200	240	690	690	0.97
WRC01-20-80-150-MN2	134	116	150	132	44	12800	6400	525	670	670	1.2
WRC01-20-80-200-MN2	134	116	200	182	44	12800	6400	525	990	990	1.2
WRC01-20-80-250-MN2	134	116	250	232	44	12800	6400	525	1250	1250	1.5

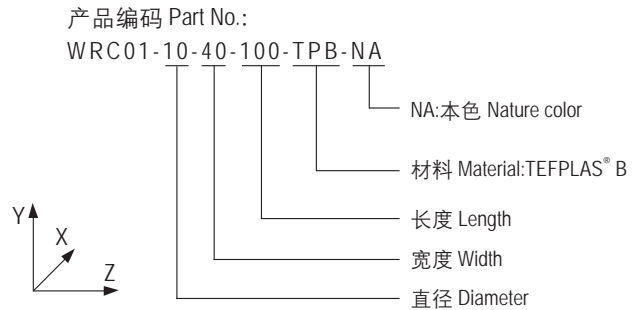
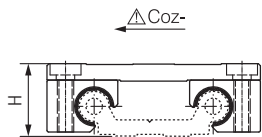
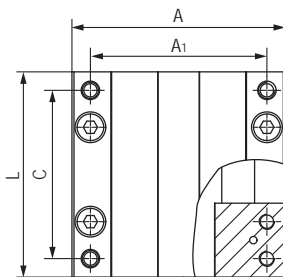
### WRC01圆导轨滑台 Assembled guide carriages



#### 产品特性 Product features

- 耐磨层材料TEFPLAS<sup>®</sup>B
  - 使用温度 ± 200℃
  - 最高允许速度4m/s
  - 重量轻、快速装配
  - 用于WR系列双轨
  - 抵抗灰尘
  - 无噪音运行
- Wear layer material: TEFPLAS<sup>®</sup> B
  - Operation temperature ± 200℃
  - Max. speed 4m/s
  - Fast assembly and light weight
  - For WR dual guide rails
  - Resistant dust and silent
  - Silent operation
  - Variable length can be fitted

#### 标准规格 Standard specifications



产品编码 Part No.	A [mm]	A <sub>1</sub> [mm]	L [mm]	C [mm]	H [mm]	静态载荷 Static load					重量 Weight [kg]
						Coy [N]	Coz [N]	Mox [Nm]	Moy [Nm]	Moz [Nm]	
WRC01-10-40-100-TPB	73	60	100	87	24	5600	2800	112	200	200	0.29
WRC01-10-40-150-TPB	73	60	150	137	24	5600	2800	112	340	340	0.34
WRC01-10-40-200-TPB	73	60	200	187	24	5600	2800	112	482	482	0.4
WRC01-10-80-100-TPB	107	94	100	87	24	5600	2800	209	200	200	0.34
WRC01-10-80-150-TPB	107	94	150	137	24	5600	2800	209	340	340	0.42
WRC01-10-80-200-TPB	107	94	200	187	24	5600	2800	209	482	482	0.5
WRC01-16-60-100-TPB	104	86	100	82	35	9840	4920	282	318	318	0.71
WRC01-16-60-150-TPB	104	86	150	132	35	9840	4920	282	565	565	0.84
WRC01-16-60-200-TPB	104	86	200	182	35	9840	4920	282	810	810	0.97
WRC01-20-80-150-TPB	134	116	150	132	44	15040	7520	617	788	788	1.2
WRC01-20-80-200-TPB	134	116	200	182	44	15040	7520	617	1164	1164	1.2
WRC01-20-80-250-TPB	134	116	250	232	44	15040	7520	617	1470	1470	1.5